

C  
T  
T  
C  
Y



**OUTDOOR LIVING CALCULATIONS**

**SITE ZONING-R40**

Outdoor Living Area	45.79m <sup>2</sup>
Council Required	20m <sup>2</sup>
Uncovered Open Space	29.35m <sup>2</sup>
Council Required	13.3m <sup>2</sup>



**SITE ZONING-R40**

ISHIRE!

Area of Site	187.5m <sup>2</sup>
Shared C/P	N/A
Total Area of Site	187.5m <sup>2</sup>
Area of Building	102.73m <sup>2</sup>
<b>SITE COVERAGE</b>	<b>54.78%</b>
Allowed Coverage	55%

Zone	Area	Perimeter
GROUND FLOOR	81.74	44.76
GARAGE	19.14	18.20
ALFRESCO	10.98	14.98
PORCH	1.85	5.46
	<b>113.71 m<sup>2</sup></b>	<b>83.40 m</b>

FLOOR	PITCH	AREA
GROUND FLOOR	24° 43' 0"	120.52
		<b>120.52 m<sup>2</sup></b>

Quote Number: **iQ23010**

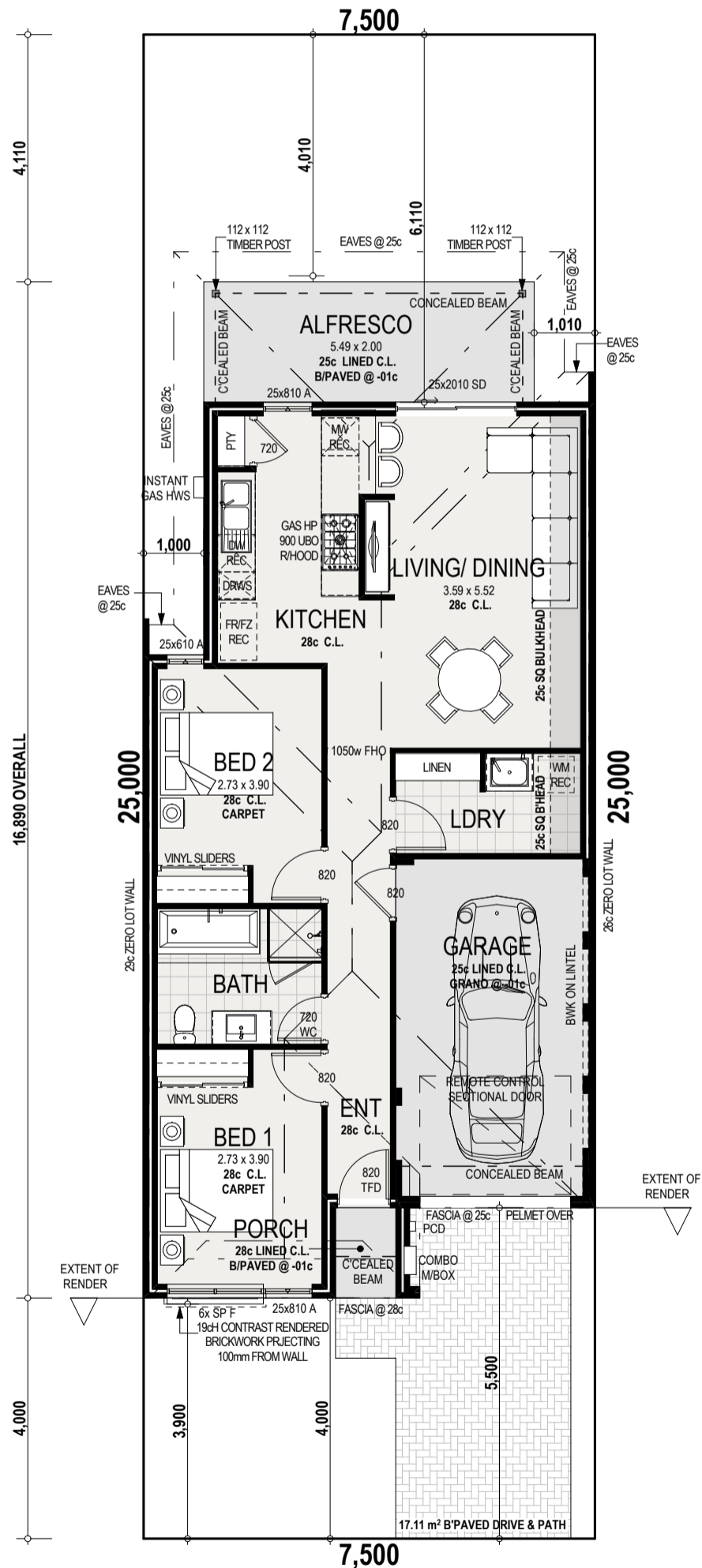
Draft Sketch: A

Sales Consultant: YATTA HOMES

Drawn: RT

Date Drawn: 24/01/23

Client Signature: \_\_\_\_\_



**CLIENT NOTE:** PLEASE CHECK ALL WINDOWS/DOOR SIZES & POSITIONS. THERE WILL BE NO ALLOWANCE FOR ANY STRUCTURAL CHANGES AFTER PPA SIGN UP, THIS INCLUDES FOOTPRINT OF HOUSE, ROOF LINES, WINDOWS & DOORS, INTERNAL & EXTERNAL DOORS ETC. UNLESS REQUIRED BY ENGINEERS, DEVELOPERS OR COUNCIL.

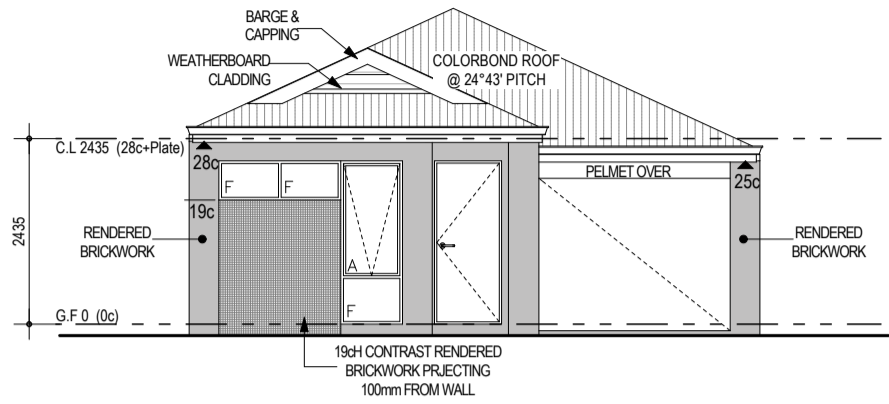
**General Note:** Landscaping, Fencing, Paving & Furniture Placement are an Indication and are for Illustration Purpose Only

**Design Note:** Final Drawings may Vary once a Feature Survey is completed. Engineering and Council may also alter this design

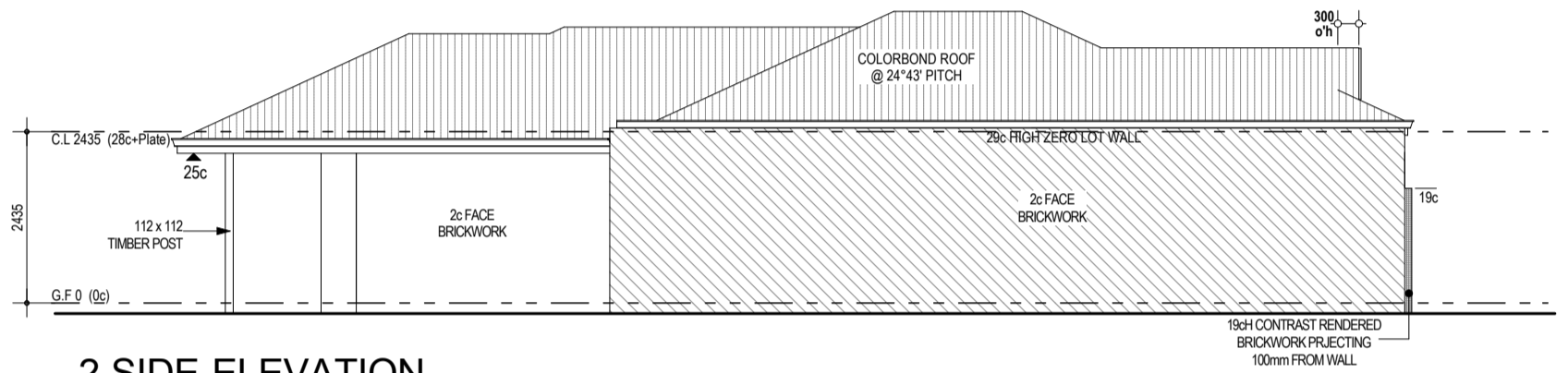
**Elevation Note:** Materials & Finishes in this 3D Image are for Illustration Purpose only

**ONLY TRADEMARK DRAWING SHOWN.  
FOR LUXURY INCLUSIONS SEE SPECIFICATION**

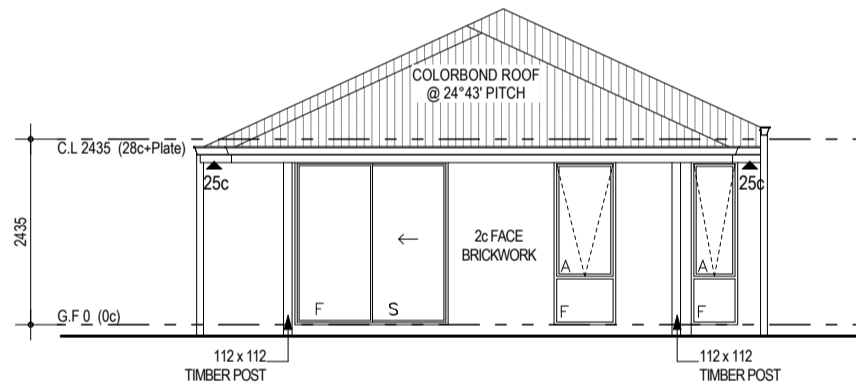
© Copyright - This design and drawings are copyright to YATTA Homes.  
It shall not be copied or in any format without the written permission of YATTA Homes



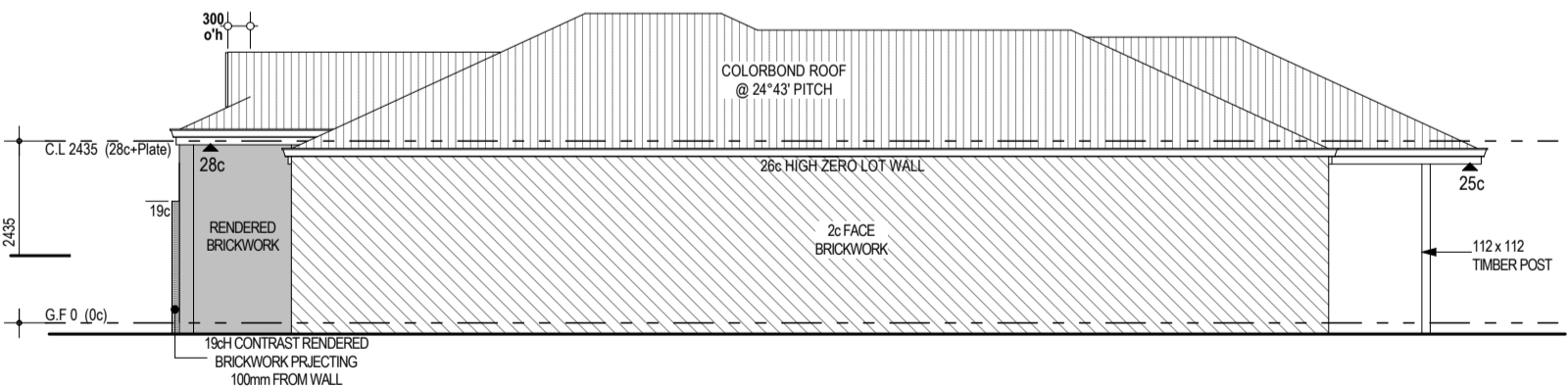
**1 FRONT ELEVATION**  
1:100



**2 SIDE ELEVATION**  
1:100



**3 REAR ELEVATION**  
1:100



**4 SIDE ELEVATION**  
1:100

### SITE ZONING-R40

ISHIRE!  
 Area of Site 187.5m<sup>2</sup>  
 Shared C/P N/A  
 Total Area of Site 187.5m<sup>2</sup>  
 Area of Building 102.73m<sup>2</sup>  
**SITE COVERAGE 54.78%**  
 Allowed Coverage 55%

Zone	Area	Perimeter
GROUND FLOOR	81.74	44.76
GARAGE	19.14	18.20
ALFRESCO	10.98	14.98
PORCH	1.85	5.46
	<b>113.71 m<sup>2</sup></b>	<b>83.40 m</b>

ROOF AREAS		
FLOOR	PITCH	AREA
GROUND FLOOR	24° 43' 0"	120.52
		<b>120.52 m<sup>2</sup></b>

CLIENT NOTE: PLEASE CHECK ALL WINDOWS/DOOR SIZES & POSITIONS. THERE WILL BE NO ALLOWANCE FOR ANY STRUCTURAL CHANGES AFTER PPA SIGN UP, THIS INCLUDES FOOTPRINT OF HOUSE, ROOF LINES, WINDOWS & DOORS, INTERNAL & EXTRNAL DOORS ETC. UNLESS REQUIRED BY ENGINEERS, DEVELOPERS OR COUNCIL.

**General Note:** Landscaping, Fencing, Paving & Furniture Placement are an Indication and are for Illustration Purpose Only

**Design Note:** Final Drawings may Vary once a Feature Survey is completed. Engineering and Council may also alter this design

**Elevation Note:** Materials & Finishes in this 3D Image are for Illustration Purpose only

Quote Number: **iq23010**

Draft Sketch: A

Sales Consultant: YATTA HOMES

Drawn: RT

Date Drawn: 24/01/23

**ONLY TRADEMARK DRAWING SHOWN.**  
**FOR LUXURY INCLUSIONS SEE SPECIFICATION**

© Copyright - This design and drawings are copyright to YATTA Homes.  
It shall not be copied or in any format without the written permission of YATTA Homes